

LEVEL: EMERGING

Directions: Find the midpoint and length of each line segment. Round your answers to 2 decimal places.

1) (2,-4) and (-6,5)

a) Midpoint

b) Length

2) (-10,-1) and (5,1)

a) Midpoint

b) Length

3) (-8,4) and (-3,12)

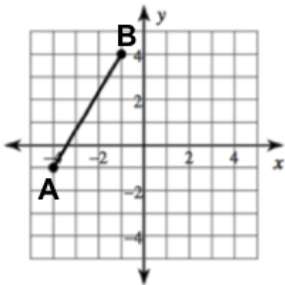
a) Midpoint

b) Length

LEVEL: PROFICIENT

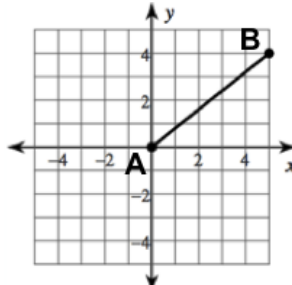
Directions: Find the length of line segment \overline{AB} . Round your answers to 2 decimal places.

4)



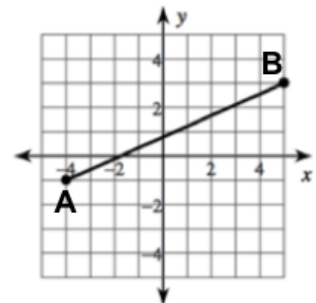
$m\overline{AB} =$ _____

5)



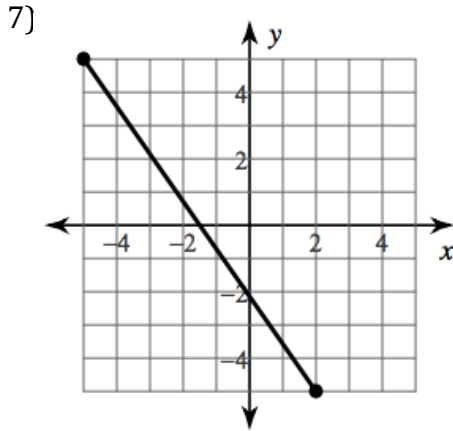
$m\overline{AB} =$ _____

6)



$m\overline{AB} =$ _____

Directions: Find the midpoints of the given line segments. Then find the sum of the x -coordinate and the y -coordinate.

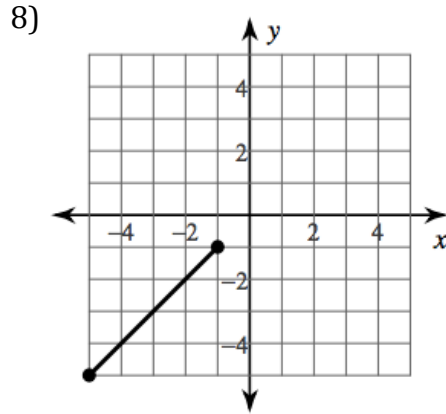


Midpoint: _____

x -coordinate : _____

y -coordinate: _____

Sum: _____

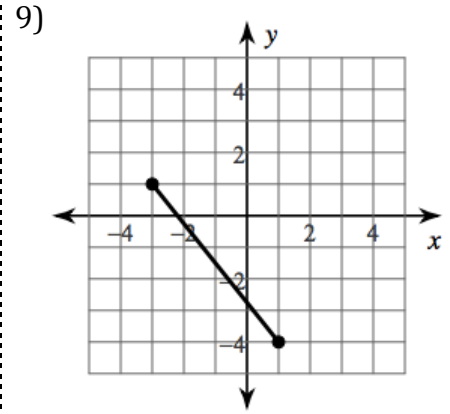


Midpoint: _____

x -coordinate : _____

y -coordinate: _____

Sum: _____



Midpoint: _____

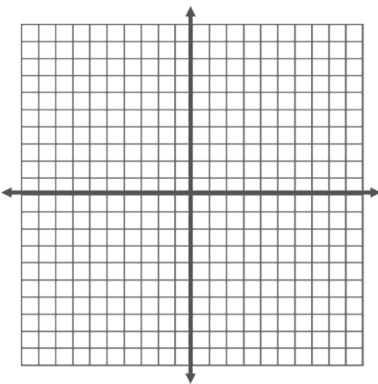
x -coordinate : _____

y -coordinate: _____

Sum: _____

LEVEL: MASTERY

10) Draw a line segment that has a midpoint at $(-2, 1)$ and one endpoint at $(3, 3)$. Find the other endpoint.



Endpoint: _____

11) Error analysis: Michelle was told to find the midpoint between the two given points. Determine where she made the error in her work.

Problem: Points $(-2, 4)$ and $(8, 4)$

Step 1: $\left(\frac{8+2}{2}, \frac{4-4}{2}\right)$

Step 2: $\left(\frac{10}{2}, \frac{1}{2}\right)$

Step 3: $Midpoint = \left(5, \frac{1}{2}\right)$

a) Error made in (circle one):

Step 1

Step 2

Step 3

b) Describe the error:

Directions:

Unit 1.2B Day 2 Worksheet Answers

1.

a. $(-2, 0.5)$

b. 12.04

2.

a. $(-2.5, 0)$

b. 15.13

3.

a. $(-5.5, 8)$

b. 9.43

4. $m\overline{AB} = 5.83$

5. $m\overline{AB} = 6.40$

6. $m\overline{AB} = 9.85$

7. $SUM = -1.5$

8. $SUM = -6$

9. $SUM = -2.5$

10. $(-7, -1)$

11.

a. Step 1

b. Answers may vary