

**LEVEL: EMERGING**

**SUBTRACTION & ADDITION** Directions: Solve the equation. Check your solution.

1)  $x + 5 = 8$

2)  $11 = f + 6$

3)  $6 = 9 + h$

4)  $y - 4 = 3$

5)  $14 = k - 3$

6)  $-2 = n - 6$

**MULTIPLICATION & DIVISION** Directions: Solve the equation. Check Your Solution

7)  $5g = 20$

8)  $48 = 8c$

9)  $15 = -h$

10)  $\frac{y}{3} = 5$

11)  $8 = \frac{x}{6}$

12)  $-11 = \frac{z}{-2}$

**LEVEL: PROFICIENT**

**ALL OPERATIONS** Directions: Solve the equation. Check Your Solution

13)  $\frac{3}{4} = \frac{1}{8} + v$

14)  $-0.12 = \frac{y}{-0.5}$

15)  $\frac{1}{3}c = 32$

16)  $\frac{3}{2}k = 18$

17)  $-\frac{2}{7}v = 16$

18)  $\frac{1}{3}y = \frac{1}{5}$

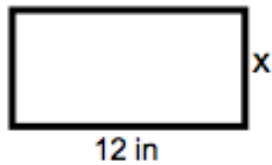
Answers:

- |               |                       |              |              |                       |               |              |              |
|---------------|-----------------------|--------------|--------------|-----------------------|---------------|--------------|--------------|
| 1) $x = 3$    | 2) $f = 5$            | 3) $h = -3$  | 4) $y = 7$   | 5) $k = 17$           | 6) $n = 4$    | 7) $g = 4$   | 8) $c = 6$   |
| 9) $h = -15$  | 10) $y = 15$          | 11) $x = 48$ | 12) $z = 22$ | 13) $v = \frac{5}{8}$ | 14) $y = .06$ | 15) $c = 96$ | 16) $k = 12$ |
| 17) $v = -56$ | 18) $y = \frac{3}{5}$ |              |              |                       |               |              |              |

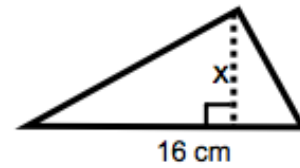
## LEVEL: MASTERY

The rectangle or triangle has the given area  $A$ . **Write and solve an equation** to find the value of the missing

19)  $A = 54 \text{ in}^2$



20)  $A = 72 \text{ cm}^2$



---

Find the value of  $b$  using the given information. Show your work for evidence.

21)  $4a = 6$  and  $b = a - 2$

22)  $a - 6.7 = 3.1$  and  $b = 5a$

---

23) The van used to transport patients to and from a rehabilitation facility is equipped with a wheel chair lift. The maximum lifting capacity for the lift is 300 pounds. The wheelchairs used by the facility weigh 55 pounds each. What is the maximum weight of a wheelchair occupant who can use the lift?



---

24) An American flag has a length that is 1.9 times its width. What is the area of a flag that has a length of 9.5 feet?



---

Answers:

19)  $54 = 12x$ ;  $x = 4.5 \text{ in}$       20)  $72 = \frac{1}{2}(16)x$ ;  $x = 9 \text{ cm}$

21)  $b = -0.5$

22)  $b = 49$

23)  $245lb$

24)  $47.5 \text{ ft}^2$